



SOFT CLOSING  
SLIDING SYSTEMS

CATALOG



NYGLAZING  
GROUP

NY GLAZING  
NYGLAZING.COM

---

#### Core technology

Glass material, since their discovery, revolutionized for construction industry, more and more glass doors and windows are used by modern architecture.

It not only can ease the burden of the architecture, but also make the interior landscape more beautiful. As we all know, glass door is fragile. However, the application of buffer in designing the sliding door makes it possible to reduce noise and collision due to inertia during using the door and greatly extend the service life as the glass moving frequently



NYGLAZING  
GROUP



MODERN DESIGN



SALES TEAM



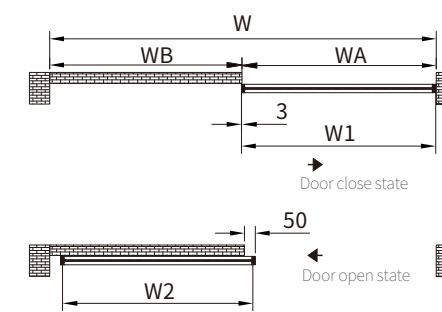
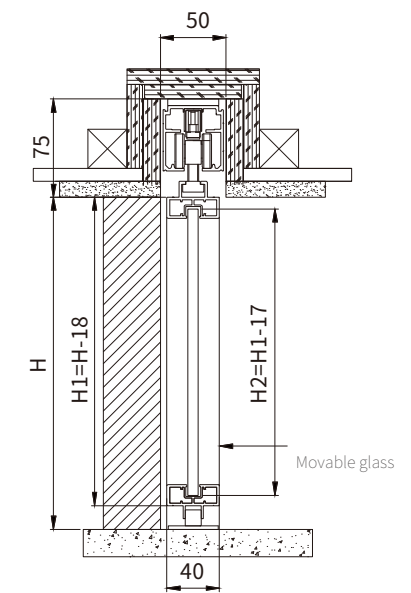
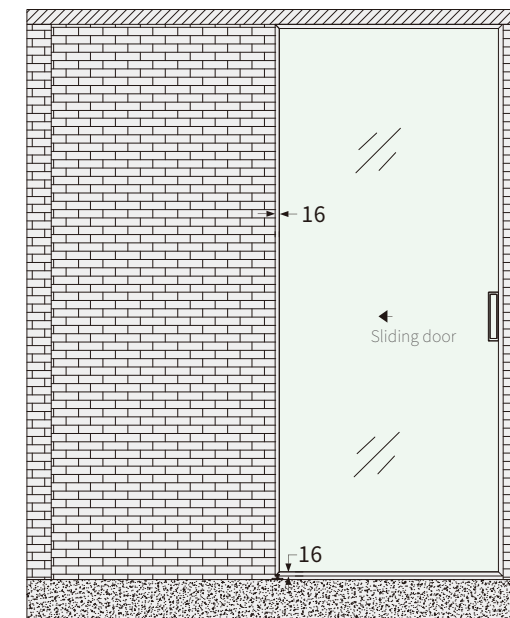
PROFESSIONAL CRAFT



SERVICE OUTLETS



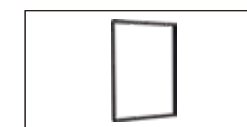
## INSTALLATION PLAN



### AL626-M16Y02-AYS (Single sliding door)

The max.load weight: 90KGS  
Glass thickness: 8mm

Assemble fittings



AL62620B-3M (1PCS)



SA62620B-2-S2 (2PCS)



SA62620B-4D (2PCS)



SA62300G-8G (1PCS)



SA62620B-1P-ZN (2PCS)



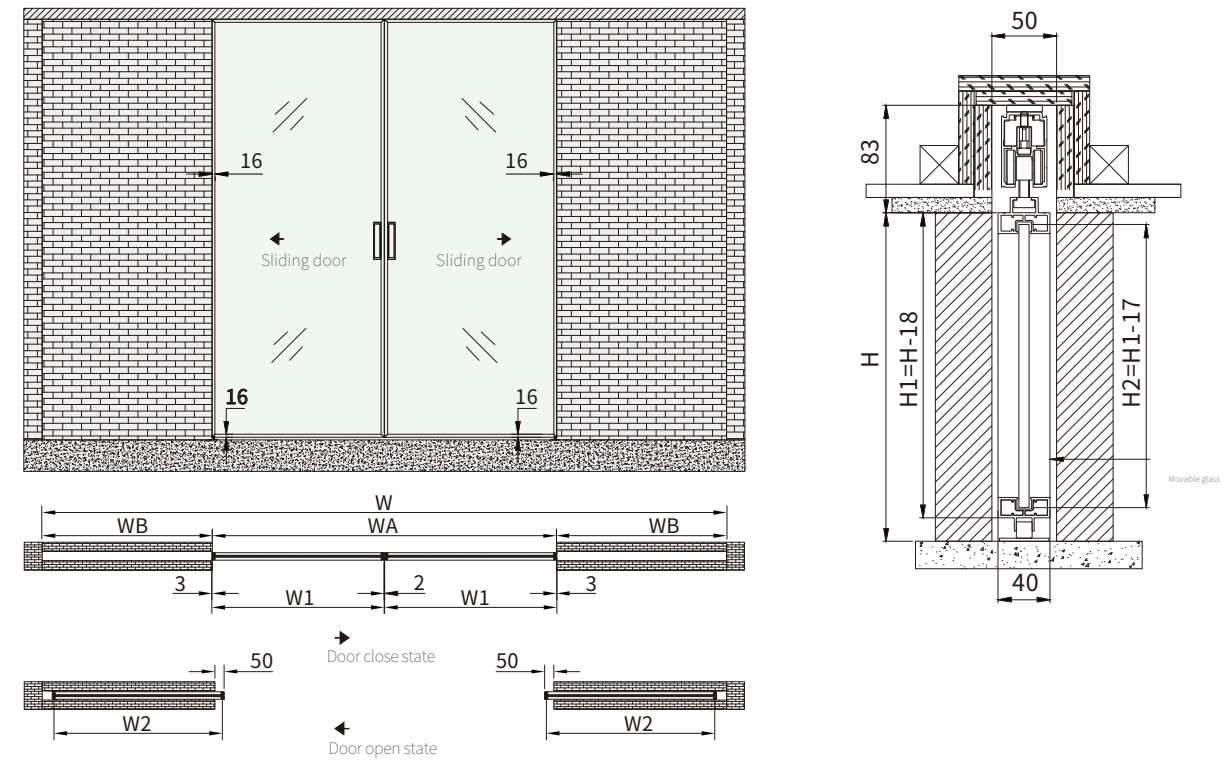
AL62600A-23B-200 (1PCS)



SA62600B-29A-D (1PCS)



## INSTALLATION PLAN



### AL626L-M16Y02-AYS

( Double open sliding door )

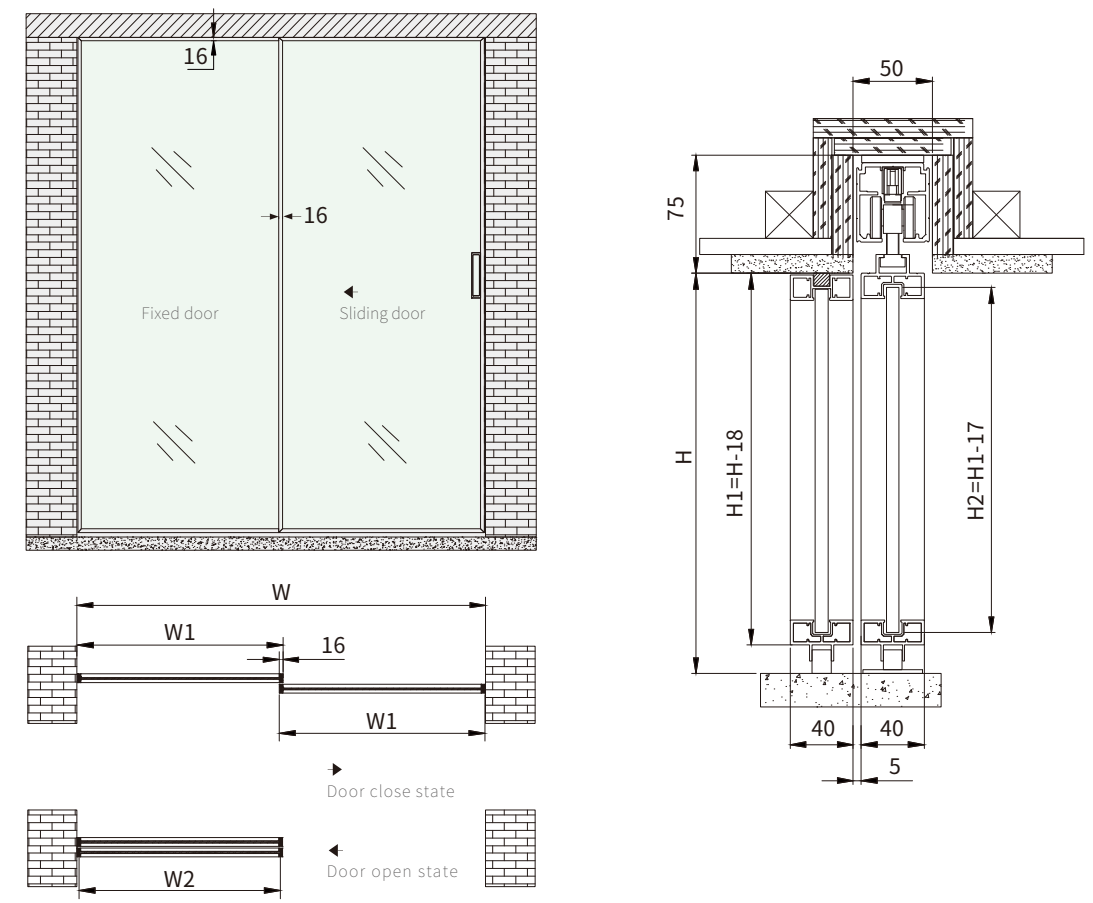
The max.load weight: 90KGS  
Glass thickness: 8mm

Assemble fittings





**INSTALLATION PLAN**



**AL626L-M16Y11-A** (One fixed one sliding door)

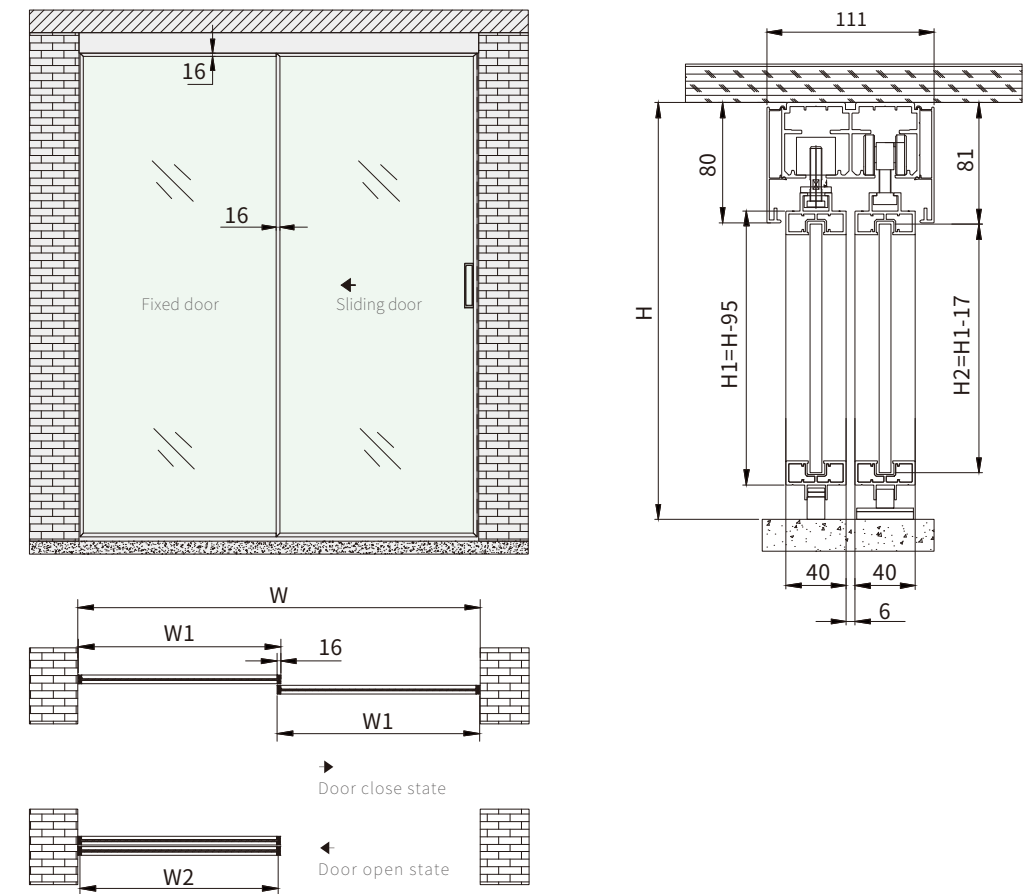
The max.load weight: 90KGS  
Glass thickness: 8mm

Assemble fittings

- |                                                                                                             |                                                                                                                |                                                                                                                  |                                                                                                                |
|-------------------------------------------------------------------------------------------------------------|----------------------------------------------------------------------------------------------------------------|------------------------------------------------------------------------------------------------------------------|----------------------------------------------------------------------------------------------------------------|
| <br>AL62620B-3M (1PCS) | <br>AL62620B-8M (1PCS)    | <br>SA62620B-2-S2 (2PCS)    | <br>SA62620B-4C (2PCS)    |
| <br>SA62300G-8G (2PCS) | <br>SA62620B-1P-ZN (2PCS) | <br>AL62600A-23B-200 (1PCS) | <br>SA62600B-29A-D (1PCS) |



## INSTALLATION PLAN



### AL626L-M16Y11-W (One fixed one sliding door)

The max.load weight: 90KGS  
Glass thickness: 8mm

Assemble fittings



AL62620B-3M (1PCS)



AL62620B-7M (1PCS)



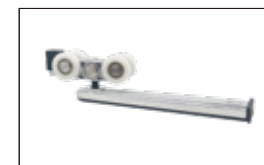
SA62620B-2-S2 (2PCS)



SA62620B-4C (2PCS)



SA62300G-8G (1PCS)



SA62620B-1P-ZN (2PCS)



AL62600A-23B-200 (1PCS)



SA62600B-17D (2PCS)



SA62600B-29B-D (1PCS)



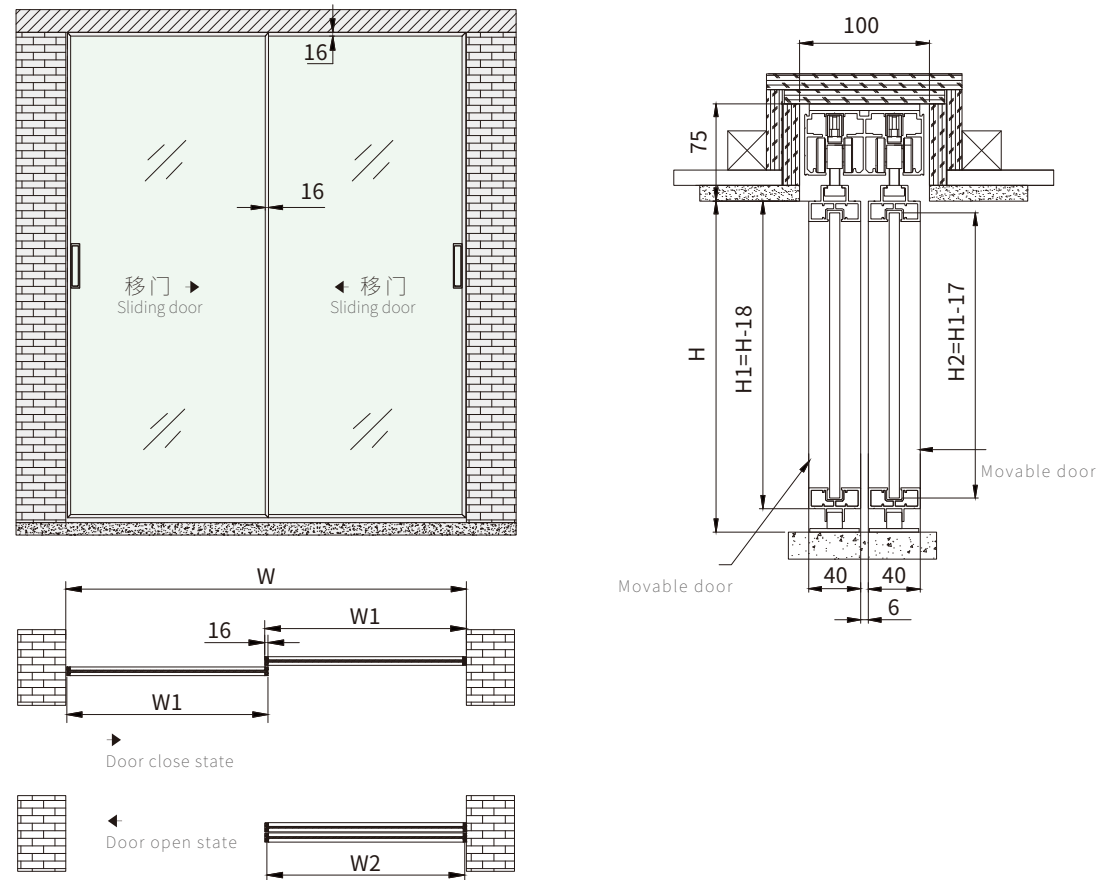
## AL626L-M16Y-2

---

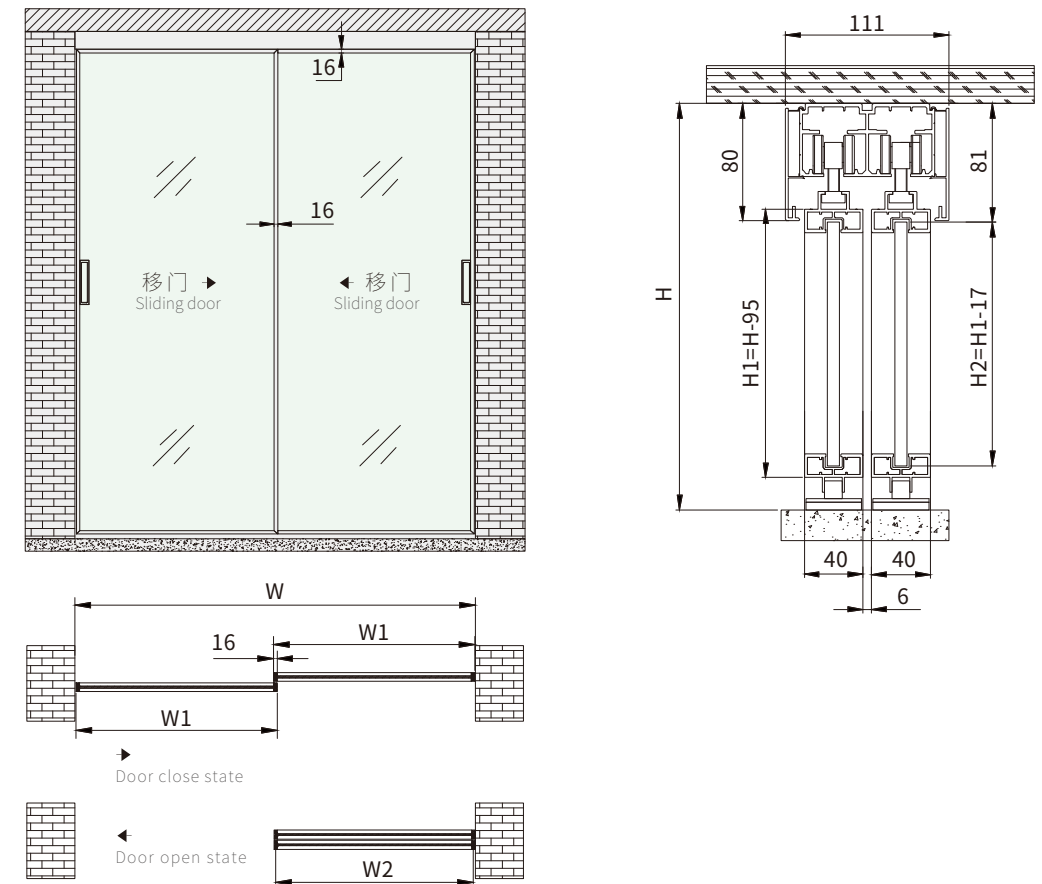
The series of the telescopic sliding door is no bottom track, very simple and elegance design. It is very easy to clean the floor. The series of the synchronous sliding door is realize the max opening space.



## INSTALLATION PLAN



## INSTALLATION PLAN



### AL626L-M16Y02-AH (Double track sliding door)

The max.load weight: 90KGS  
Glass thickness: 8mm  
Assemble fittings



### AL626L-M16Y02-WH (Double track sliding door)

The max.load weight: 90KGS  
Glass thickness: 8mm  
Assemble fittings





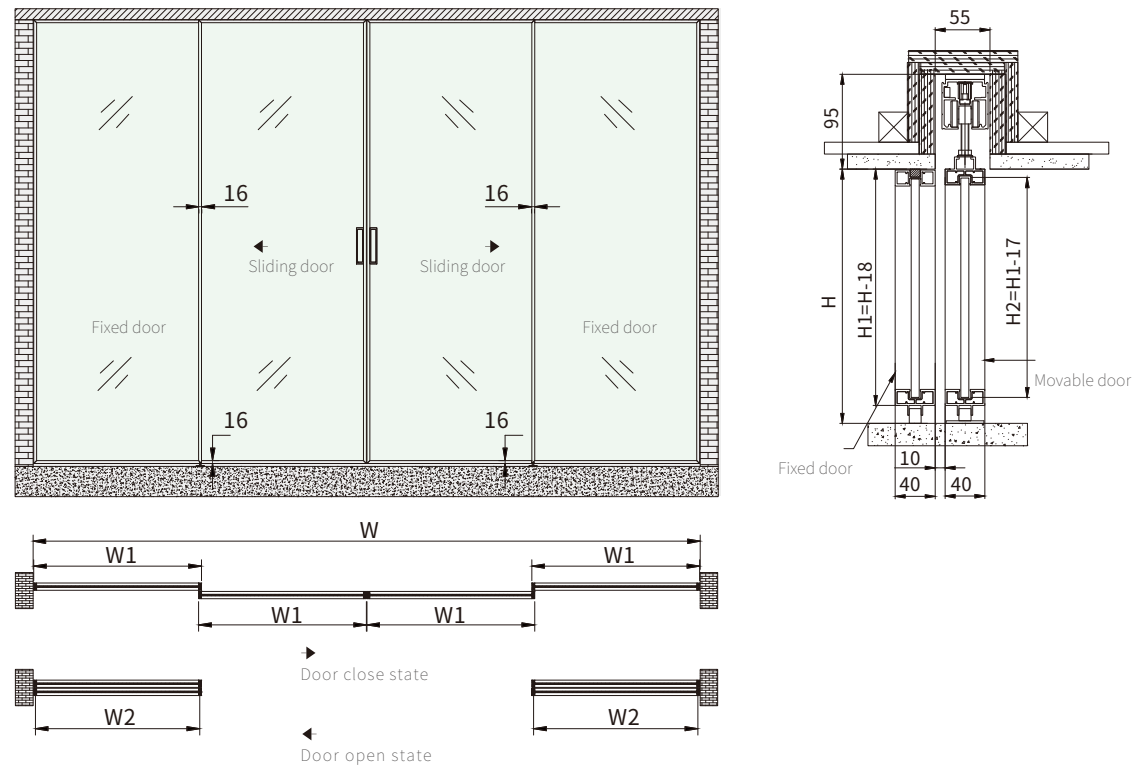
## AL626L-M16F22

---

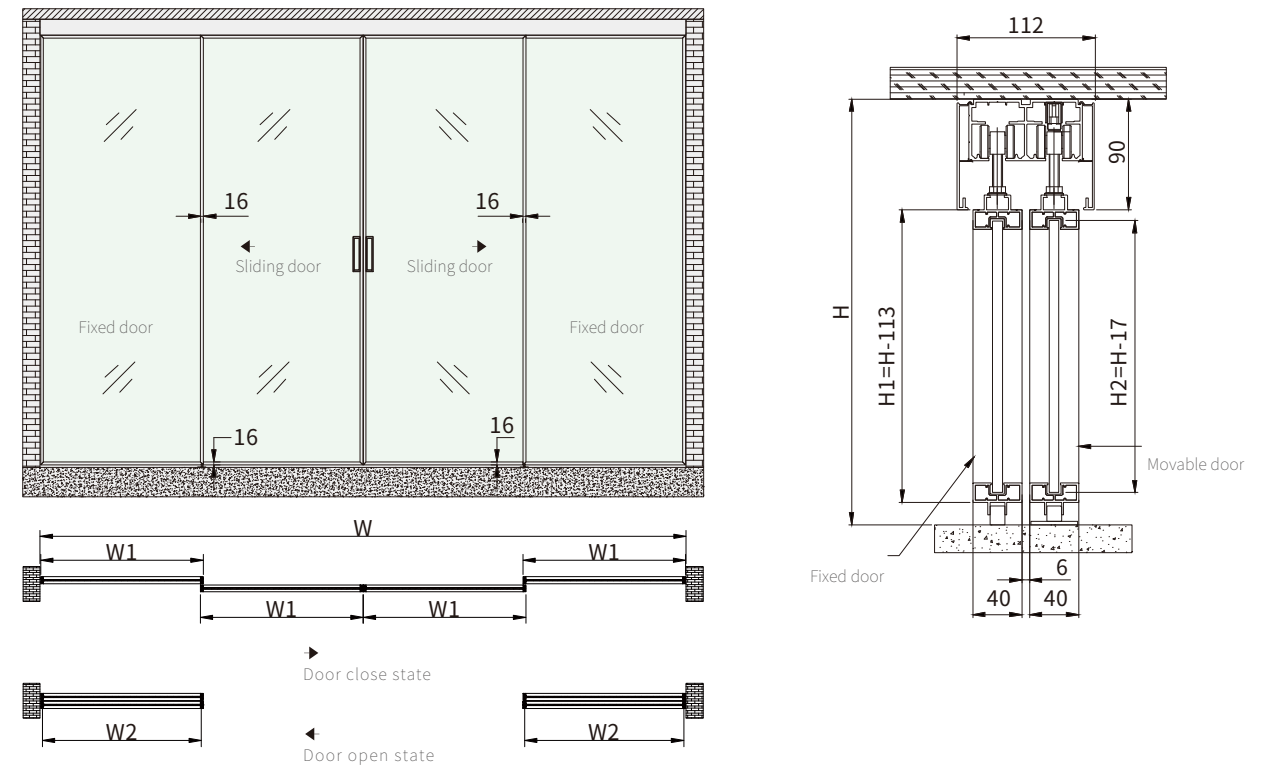
The series of the two side direction synchronous soft close sliding door is very simple and elegance design.

The roller was concealed to track and the track was concealed to ceiling. When we slide the left door panel and the right door panel will be also open to opposite. With soft closing system, reduce the inertial impact while open or close the door. It is very graceful and safety. Innovative "soft close" device for your anti-slam needs. The roller installation without glass hole, more simple and convenience, high efficiency save the installation time and cost.

## INSTALLATION PLAN



## INSTALLATION PLAN



### AL626L-M16F22-A

( Two fixed two sides direction synchronous sliding door )

The max.load weight: 80KGS  
Glass thickness: 8mm



SA62600L-BS111 (1PCS)

Assemble fittings



AL62620B-10M (2PCS)



SA62600L-1 MD (2PCS)



SA62600L-1E (1PCS)



SA62600L-1EB (1PCS)



SA62600L-2E-D (2PCS)



AL62620B-8M (2PCS)



SA62620B-2 (2PCS)



SA62620B-4D (2PCS)



SA62610B-10 (1PCS)



SA62600B-29A-D (1 PCS)



SA62300G-8G (2PCS)



AL62600A-23B-200 (2PCS)

### AL626L-M16F22-W

( Two fixed two sides direction synchronous sliding door )

The max.load weight: 80KGS  
Glass thickness: 8mm



AL62620B-10M (2PCS)

Assemble fittings



SA62600L-1MD (2PCS)



SA62600L-1E (1PCS)



SA62600L-1EB (1PCS)



SA62600L-2E-D (2PCS)



AL62620B-7M-B (2PCS)



SA62620B-2 (2PCS)



SA62620B-4D (2PCS)



SA62610B-10 (1PCS)



SA62600B-17F (2PCS)



SA62600B-29B-D (1PCS)



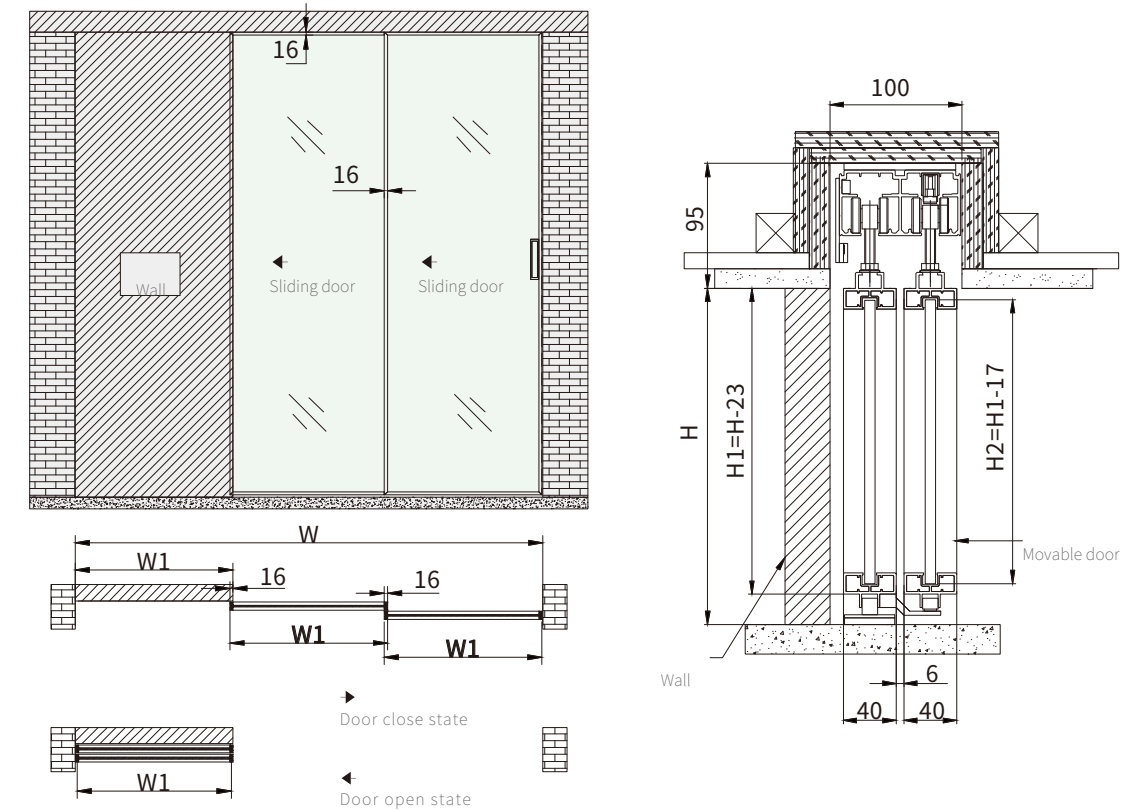
SA62300G-8G (2PCS)



AL62600A-23B-200 (2PCS)



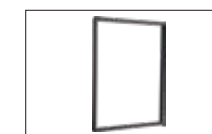
## INSTALLATION PLAN



### AL626L-M16Z02-A ( Two synchronous sliding door )

The max.load weight: 90KGS  
Glass thickness: 8mm

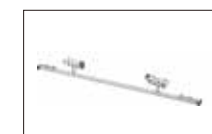
#### Assemble fittings



AL62620B-9M (1PCS)



AL62620B-10M (1PCS)



SA62600L-1MD (2PCS)



SA62620B-2 (2PCS)



SA62620B-4D (2PCS)



SA62600L-2B-B (1PCS)



SA62600L-4B (1PC)



SA62600L-5B (1 PCS)



SA62600L-8B-B (1PCS)



SA62610B-10(1PCS)



SA62600B-29B-B (1PCS)



SA62600L-BS60 (1PCS)



SA62600L-BS110 (1PCS)



SA62300G-8G (1 PCS)



AL62600A-23B-200 (1PCS)

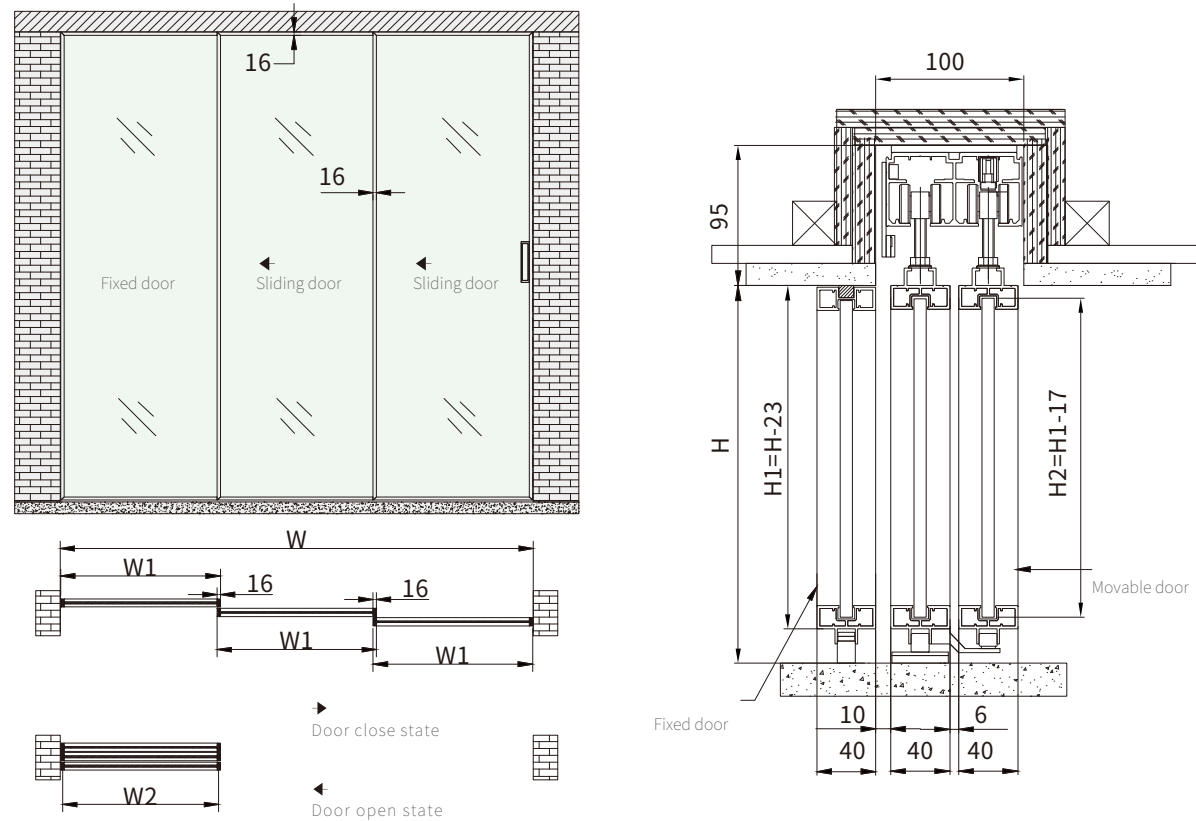


## AL626L-M16Z12

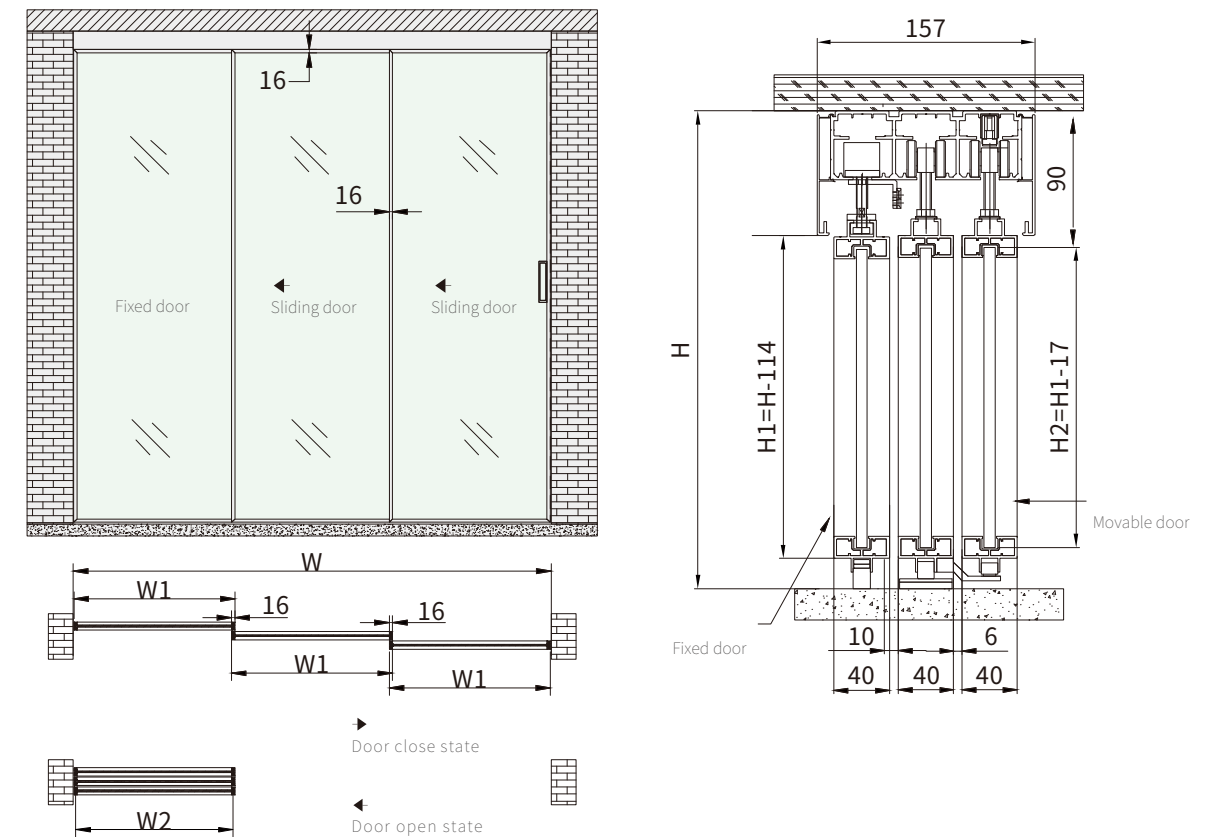
---

The traditional sliding door design has relatively low space utilization, the door opening space is relatively small. It is inconvenient for large objects to enter and exit the door. The new designed synchronous sliding door series is maximizes the door opening space. Greatly improve space utilization

## INSTALLATION PLAN



## INSTALLATION PLAN

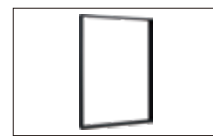


### AL626L-M16Z12-A

( One fixed two synchronous sliding door )

The max.load weight: 90KGS  
Glass thickness: 8mm

Assemble fittings



AL62620B-8M (1PCS)

### AL626L-M16Z12-W

( One fixed two synchronous sliding door )

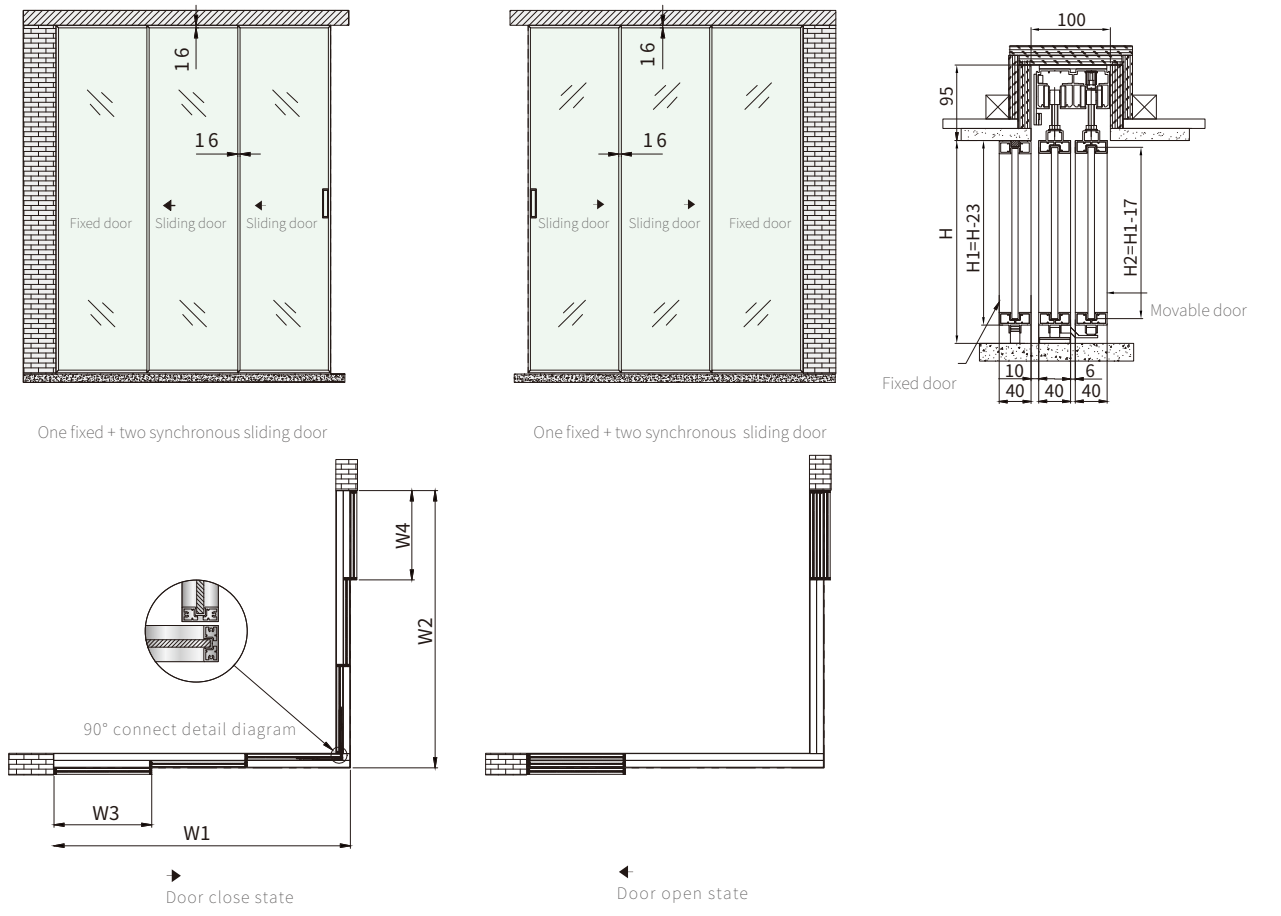
The max.load weight: 90KGS  
Glass thickness: 8mm

Assemble fittings





## INSTALLATION PLAN



## AL626L-M16Z24-AZ

The max.load weight: 90KGS  
Glass thickness: 8mm

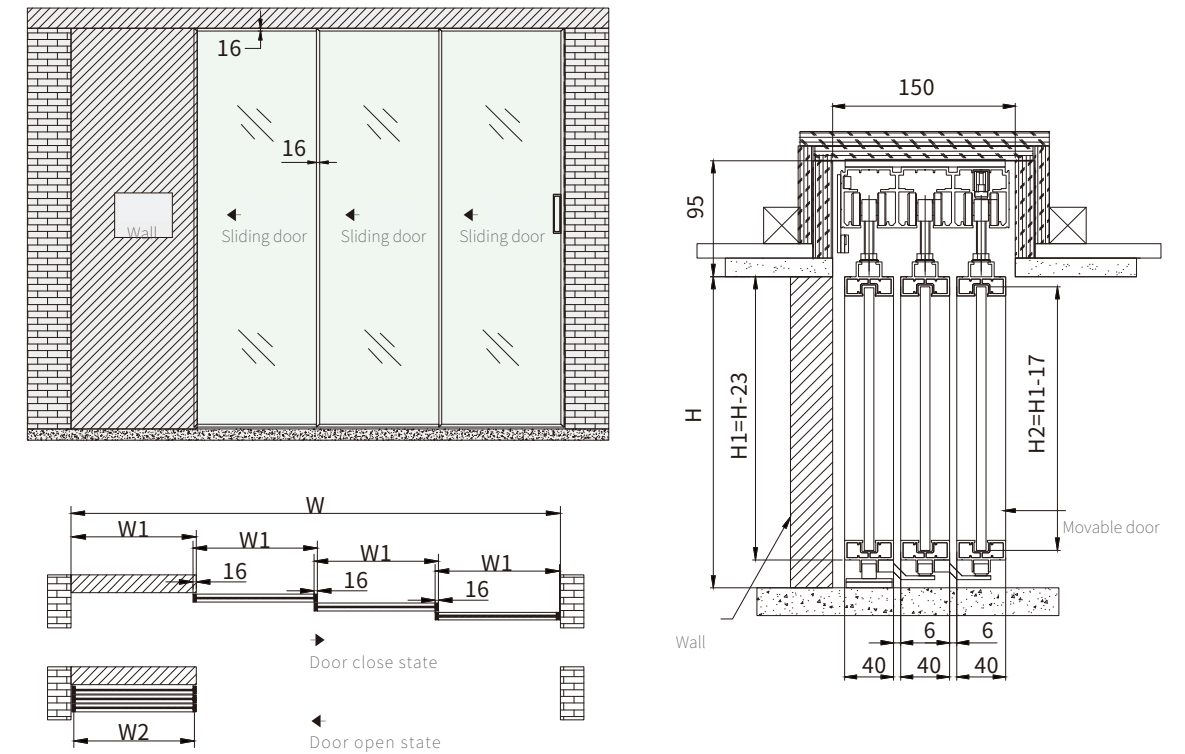
( 90 degree L shape open  
one fixed two synchronous  
sliding door )

Assemble fittings





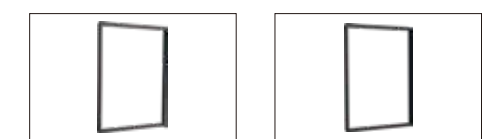
## INSTALLATION PLAN



### AL626L-M16Z03-A ( Three synchronous sliding door )

The max. load weight: 90KGS  
Glass thickness: 8mm

Assemble fittings

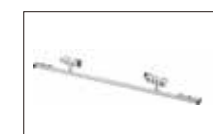


AL62620B-9M (2PCS)

AL62620B-10M (1PCS)



SA62610B-10 (2PCS)



SA62600L-1MD (3PCS)



SA62620B-2 (2PCS)



SA62620B-4D (2PCS)



SA62600L-2B-B (1PCS)



SA62600L-3B-B (1PCS)



SA62600L-4B (1PCS)



SA62600L-5B (1PCS)



SA62600L-6B-B (1PCS)



SA62600L-8B-B (1PCS)



SA62600B-29C-B (1PCS)



SA62600L-BS60 (1PCS)



SA62600L-BS110 (1PCS)



SA62300G-8G (1PCS)



AL62600A-23B-200 (1PCS)





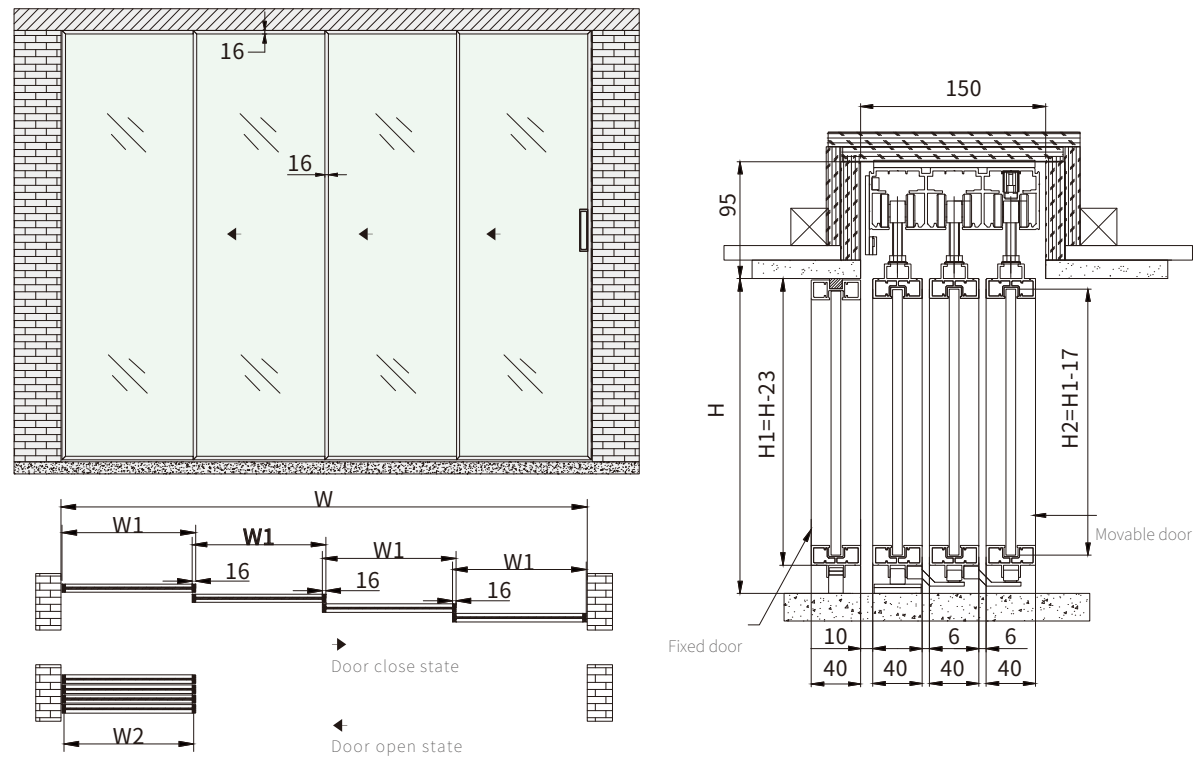
## AL626L-M16Z13

---

The upper rail is hidden in the ceiling and connected with a glass door, by a synchronizing device, which moves in a synchronized sliding door by a detachable roller and draw-bar. The product is with simple structure and easy installation. It is also an ideal product and reduces the difficulty of on-site construction and related matters.



## INSTALLATION PLAN



### AL626L-M16Z13-A

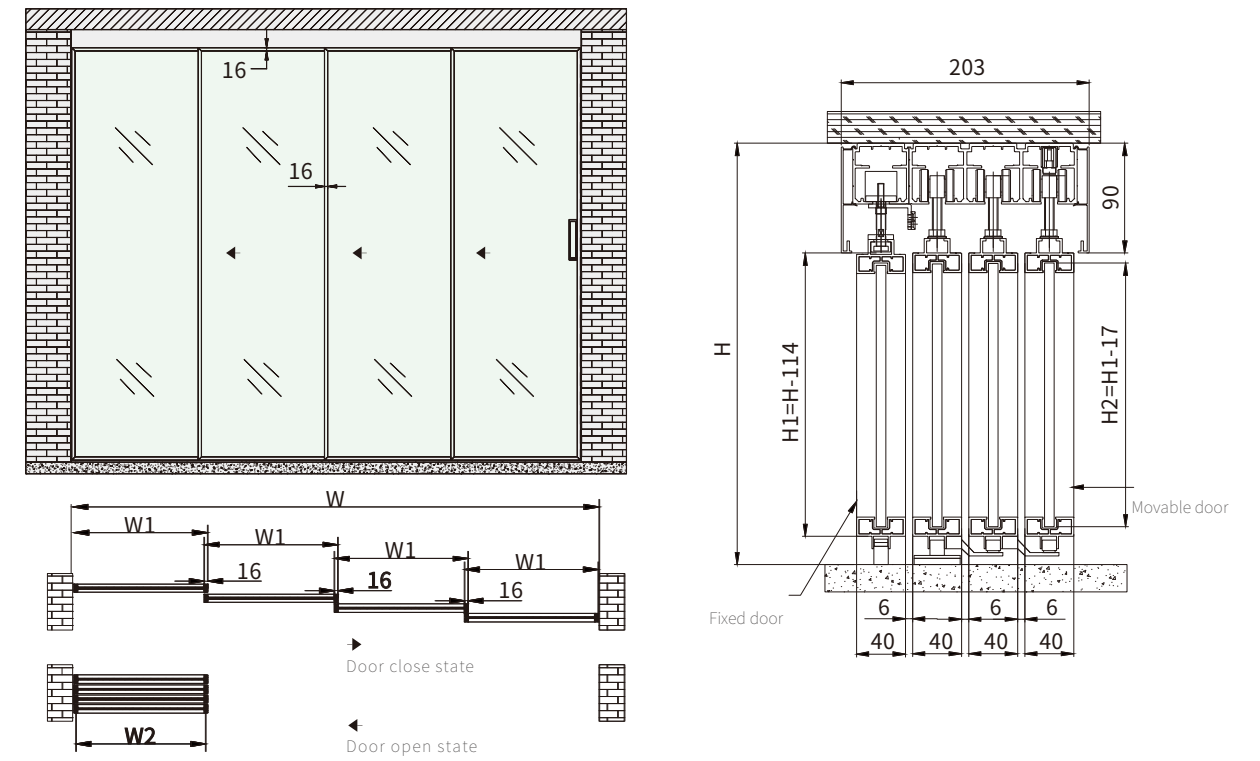
( One fixed three synchronous sliding door )

The max.load weight: 90KGS  
Glass thickness: 8mm

Assemble fittings



## INSTALLATION PLAN



### AL626L-M16Z13-W

( One fixed three synchronous sliding door )

The max.load weight: 90KGS  
Glass thickness: 8mm

Assemble fittings

